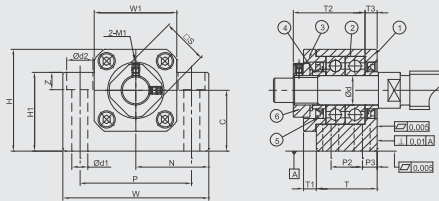
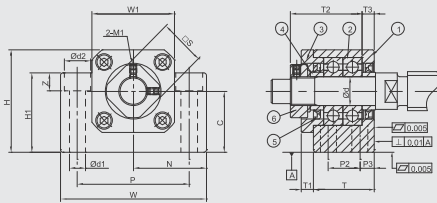


Model No.	Parts no. ① ③ ④ ⑥	
	Material	Surface Finish
GAK □□ - E □ B	S50C	Black Dyed
GAK □□ - E □ N		Ni-Plating

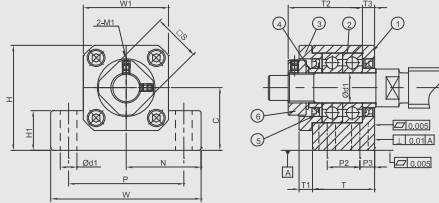
GAK10 ~ GAK15



GAK06 ~ GAK08



GAK20



Specification

Economic Type		Dimensions															
High Rigidity	Universal	Ød	T	T1	T2	T3	W	W1	H	H1	N±0.02	C	P	P2	P3	Ød1	Ød2
GAK06-ER □	GAK06-EG □	6	20	5.5	22	3.5	42	18	25	20	21	13 <sup>0.0</sup> <sub>-0.04</sub>	30	-	-	5.5	9.5
GAK08-ER □	GAK08-EG □	8	23	7	26	4	52	25	32	26	26	17 <sup>0.0</sup> <sub>-0.04</sub>	38	-	-	6	11
GAK10-ER □	GAK10-EG □	10	24	6	29.5	6	70	36	43	35	35	25 <sup>0.0</sup> <sub>-0.04</sub>	52	-	-	8.7	14
GAK12-ER □	GAK12-EG □	12	24	6	29.5	6	70	36	43	35	35	25 <sup>0.0</sup> <sub>-0.04</sub>	52	-	-	8.7	14
GAK15-ER □	GAK15-EG □	15	25	6	32	5	80	40	50	40	40	30 <sup>0.0</sup> <sub>-0.04</sub>	60	-	-	10.7	17
GAK20-ER □	GAK20-EG □	20	42	10	50	10	95	56	58	45	47.5	30 <sup>0.0</sup> <sub>-0.04</sub>	75	22	10	10.7	17

Ordering Example	GAK	10	ER	N	J
	Model No.	Shaft Dia.	Grade	Surface finish	Bearing category

GAK-B



GAK-N

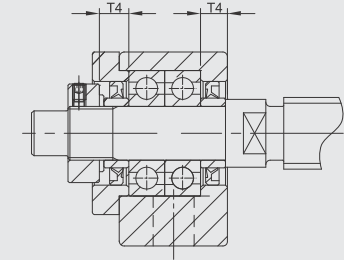
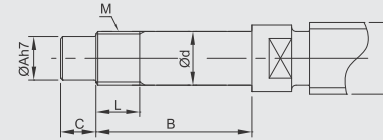


Components

No.	Parts	Material	Q'ty
①	Main housing	S50C	1
②	Bearing	SUJ2	1 pair
③	Cover	S50C	1
④	Space ring	S50C	2
⑤	Seal (<Ø8 one seal only)	NBR	2
⑥	Lucknut	S50C	1

- ① ② ③ are in one unit. No disassemble for accuracy concern.
- Bearing filled with proper lithium soap lubricant and sealed.

Recommended processing dimensions of shaft



Unit : mm

		Recommended processing dimensions of shaft								
Z	M1	□S	Ball Screw Shaft O. D.	Shaft End Diameter	Processing sizes of shaft			Nominal thread		Space ring length
					ØA	B	C	M	L	
7	M3	12	8 / 10	6 <sup>3.005</sup> <sub>0.012</sub>	5	27	8	M6*P0.75	6	5
12	M3	14	10 / 12	8 <sup>3.002</sup> <sub>0.012</sub>	6.5	31.5	7.5	M8*P1.0	7	5.5
11	M3	16	12 / 14 / 15	10 <sup>3.005</sup> <sub>0.012</sub>	8	36	15	M10*P1.0	11	5.5
11	M3	19	14 / 15 / 16	12 <sup>3.002</sup> <sub>0.012</sub>	10	36	15	M12*P1.0	11	5.5
15	M3	22	18 / 20	15 <sup>3.005</sup> <sub>0.014</sub>	12	47	20	M15*P1.0	13	6
15	M4	30	25 / 28 / 30	20 <sup>3.005</sup> <sub>0.014</sub>	17	62	25	M20*P1.0	17	11

• Supported side spec refer to P.30~P.31